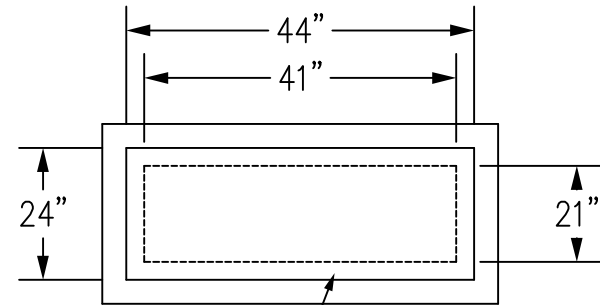
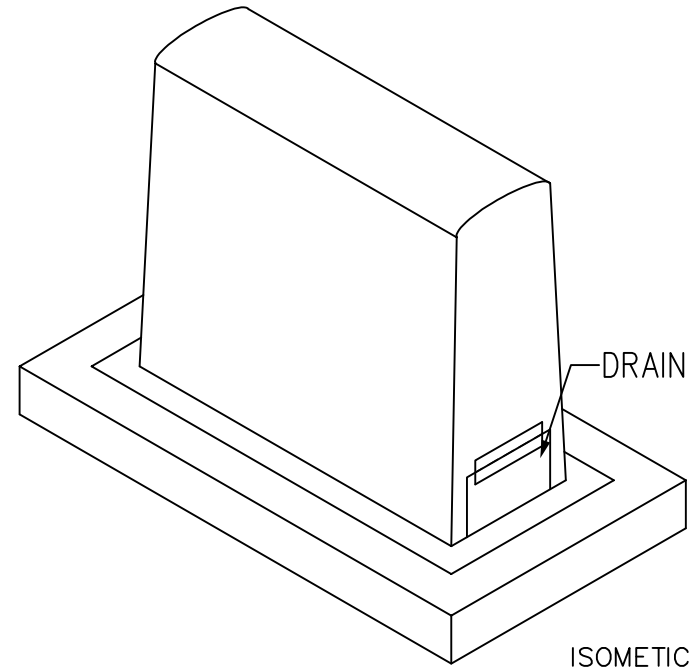


ENGINEERED TO FIT 3/4" THROUGH 2" BACKFLOW PREVENTION DEVICE INSTALLATIONS, INCLUDING
PARALLEL, MANIFOLD, AND ADDITIONAL EQUIPMENT & PIPING CONFIGURATIONS
#411-APD ASSE-1060 APPROVED

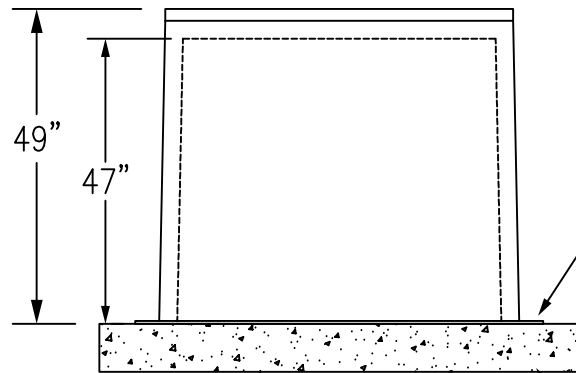


FOAM INSULATION

TOP VIEW
NOT TO SCALE



ISOMETRIC VIEW
NOT TO SCALE



MOUNTING
FLANGE 54"X36"

SLAB OR FOOTER (OPTIONAL)
RECOMMENDED PAD/FOOTER SIZE:
LENGTH: 60" x 43"

FRONT VIEW
NOT TO SCALE

SPECIFICATION:

BFPProducts Inc. enclosures are manufactured to ASSE-1060 standards and designed to be used to help protect Backflow Prevention Devices from freezing conditions and vandalism. Factory assembled construction will include a gelcoat shell backed with chop-strand polyresin bonded fiberglass, internally insulated using polyurethane spray-foam.
WEIGHT: 32 LBS

Options:

- ☐ HEAT SOURCE – HEAT TAPE #190
- ☐ T-TURF – Turf installations require elevated discharge drain to facilitate flange bury.

ASSE-1060

BFPProducts
CORPORATE OFFICE
P.O. BOX 242771
CHARLOTTE, NC 28224

PHONE: (704) 599-9407
FAX: (704) 599-0595
EMAIL: bfproducts@qmarketing.biz
WEBSITE: WWW.BFPRODUCTS.BIZ

BFPProducts, Inc
Backflow Prevention Device
Enclosures
"We've Got You Covered"

FIBERGLASS ENCLOSURE
MODEL # 411-APD
Submittal Sheet

SHEET NO.
09/03/25
411-APD